


# PRESS RELEASE

FOR IMMEDIATE RELEASE

## Stimulation for the Nation: Line, form and colour

Bicha Gallery Spring Show with guest artist and sculptor, Michael Kenny, RA

**Exhibition: April 15 - 25, 2010**

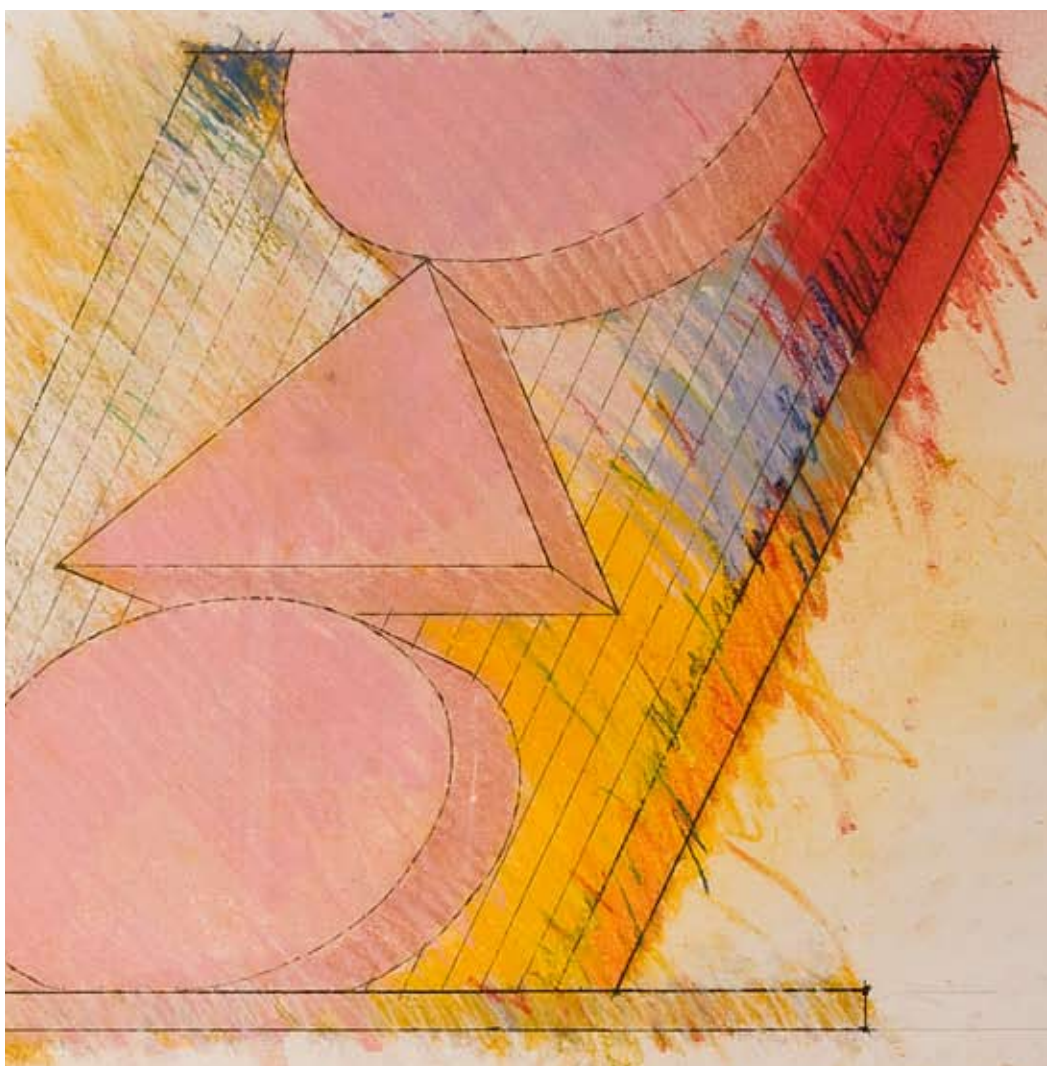
gallery@ gallery@oxo  
Oxo Tower Wharf, Bargehouse St,  
South Bank, London SE1 9PH  
11am-7.30pm  
Open daily, admission free

Bicha Gallery  
7 Gabriel's Wharf  
South Bank, London SE1 9PP  
11am-7pm  
Open daily, admission free

**Private View at gallery@oxo: April 14, 2010 / 6-8.30pm**

Including performance by contemporary composer and pianist, Lola Perrin

Bicha Gallery is pleased to present our Spring 2010 Show 'Stimulation for the Nation: Line, Form & Colour' from April 15 - 25 at the gallery@oxo as well as our Gabriel's Wharf location. We are also honoured to be able to include drawings, paintings and sculptures from a guest artist, the late British artist and sculptor, Michael Kenny, RA as a part of this exhibition.



Michael Kenny, RA, *Right Thinking II*, 1990, (detail)

**BICHA**  
STIMULATION  
FOR THE NATION

Bicha Gallery & Shop  
7 Gabriel's Wharf  
South Bank  
London SE1 9PP

T +44 (0)7721 400 048  
E info@bicha.co.uk  
www.bicha.co.uk

Michael was one of the most influential British sculptors of his generation. He was elected Associate of the Royal Academy in 1976, and a Royal Academician in 1986. Today his work is held in museums all over the world, including the British Museum, The Tate Gallery and the Victoria and Albert Museum.

For Michael, drawing was the cornerstone of the visual arts. It was the basic structure through which expression became possible. Making a line had a symbolic interpretation. His notes from 1993 included the following extract from Davis and Hersh's 'The Mathematical Experience'.

'A carpenter, using a metal ruler, draws a line across a board to use as a guide in cutting. The line he has drawn is a physical thing... Alongside this real, concrete instance of a straight line, there exists the mental idea of the mathematical abstraction of an ideal straight line. In the idealised version, all the accidentals and imperfections of the concrete instance have been miraculously eliminated.'

Bicha Gallery & Shop  
7 Gabriel's Wharf  
South Bank  
London SE1 9PP

T +44 (0)7721 400 048  
E [info@bicha.co.uk](mailto:info@bicha.co.uk)  
[www.bicha.co.uk](http://www.bicha.co.uk)

Much of his work has a spiritual dimension; an enigma or mystery that comes from within and is represented in classical elements and values. His use of perspective, the tension between symmetry and asymmetry, the setting up of harmonies - brokenness against smoothness, all allude to a classical approach but in a uniquely modernist way.



**Michael Kenny, RA, *Von Huegel's Dream*, Mixed media**

Both his drawings and sculpture have an overt and covert geometry; acting as a conceptual framework which holds everything together. These geometric forms are really about axiomatic truths. If drawing was a way of understanding the world, of searching for order in the chaos, geometric form was a way to reveal its truths and mysteries.



**Michael Kenny, RA, *The Gossip Dante Inferno Canto*, Mixed media**

When it comes to colour, his choice of materials, the colour of the stone, and the linear marks on the work were all intuitive parts of his creative process.

We have taken inspiration from Michael's contemplative work and chosen pieces from selected artists within the gallery which are to be accompanied with text written by each artist outlining the role which line, form and colour play in their individual artforms.

Artists in the exhibition will include:

Eric Bourdon, John E Brooks, John Bryson, John Crossley, Anna Dickerson, Tessa Eastman, Annie Virata Hewes, Kate Garner, Ann Mary Gollifer, Anne Kristine Jarulf, Claire Malet, Derek Marks, Annie Parker, Liz Moro, Eleonore Pironneau, Zoë Schieppati-Emery, Daniela Schneider, and Anna Toppin.

The composer and pianist, Lola Perrin, who takes inspiration from contemporary visual art and literature, will be playing a selection of piano works from her forthcoming double album due out at the end of April.

---

**For further information, text or images, please contact António Capelão.  
Gallery +44 (0)20 7928 0083 | E antonio@bicha.co.uk | www.bicha.co.uk  
Open Tuesday through Sunday from 11am till 7pm**

**Stimulation for the Nation: Line, form and colour** | April 15 – 25, 2010

**gallery@oxo** Oxo Tower Wharf, Bargehouse Street, South Bank, London SE1 9PH | www.coirstreet.org  
11am - 7.30pm | Open Daily, admission free | Tube: Waterloo, Embankment, Southwark

**Bicha Gallery** 7 Gabriel's Wharf, South Bank, London SE1 9PP | 11am - 7pm | T +44 (0)7721 400 048